

BL-240D-256-SD

Export Tool User Guide



Please refer to www.brigade-electronics.com/brigadevan for more information and technical documents

Contents

1. Introduction	3
2. Search by Time and export the file	5
3. Search by Order and export files	8
4. Export Disk Log	9
5. Format the Disk	10

1. Introduction















Attention – Customers should speak to their IT department as Admin rights are required to install and use the Export Tool.

This software only supports Windows 10.

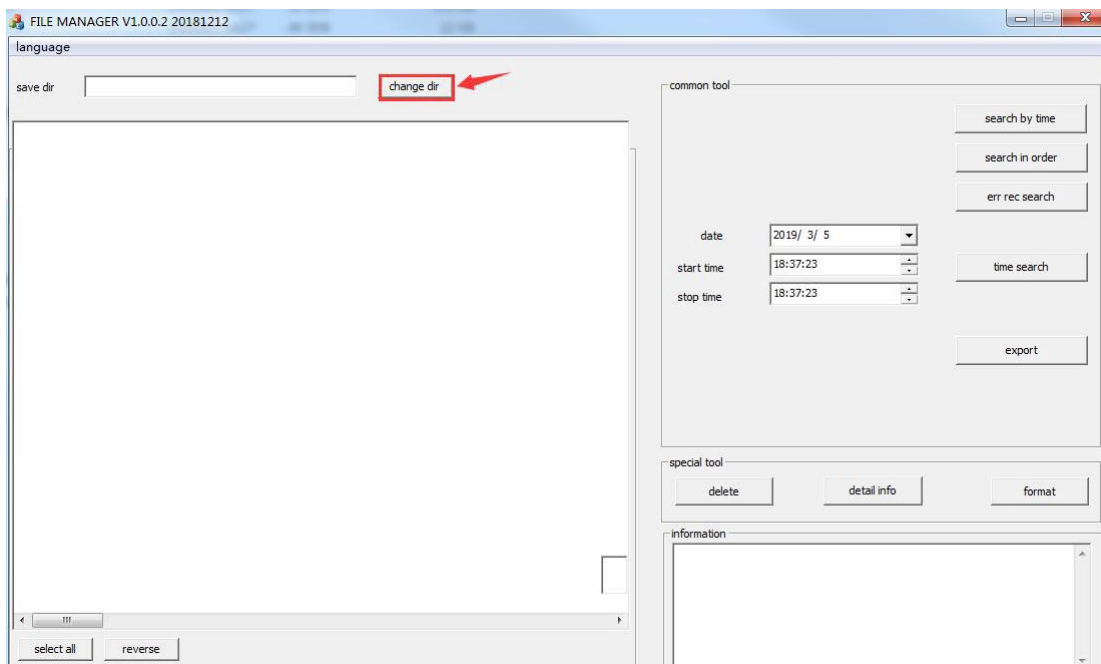
Download the latest Export Tool s/w [here](#) , download the full folder to run the applications) This is a tool for exporting large recordings and log files when you insert the SD card of BL-240D-256-SD to the PC directly.

Remove the SD card from the BL-240-256-SD and insert into your Windows PC.

To download the Export tool. Click this [FILE MANAGER.exe](#)

 avutil.dll.49	2015/6/1 14:27
 con crt140.dll	2016/6/9 22:46
 config	2019/3/5 18:34
 DiskRead.dll	2019/1/10 14:58
 FILE MANAGER	2018/12/12 18:13
 libasf.dll	2015/6/1 14:27
 mfc100.dll	2010/3/18 9:15
 mfc140u.dll	2016/7/21 23:05
 mfcm140u.dll	2016/7/21 23:05
 msvcp140.dll	2016/6/9 22:46
 msvcr100.dll	2013/6/9 16:06
 PartitionTest	2018/12/12 18:20
 vccorlib140.dll	2016/6/9 22:46
 vcruntime140.dll	2016/6/9 22:46

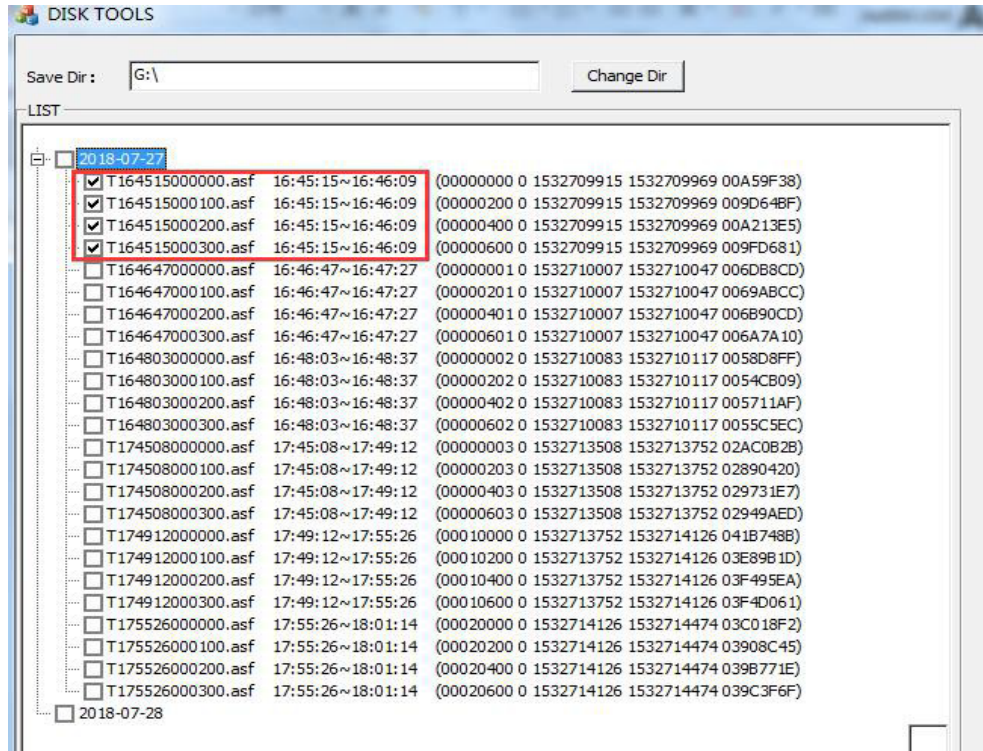
Click **Change Dir** to select the removable Disk (SD card).



2. Search by Time and export the file

Click [**Search By Time**]. The recording files will show in the directory tree by recording date.

Double click on the date to see the files recorded on the selected day.



File name format:

T164515000000.ASF 16:45:15~16:46:09

T: Time Recording

164515: Start time of recording file

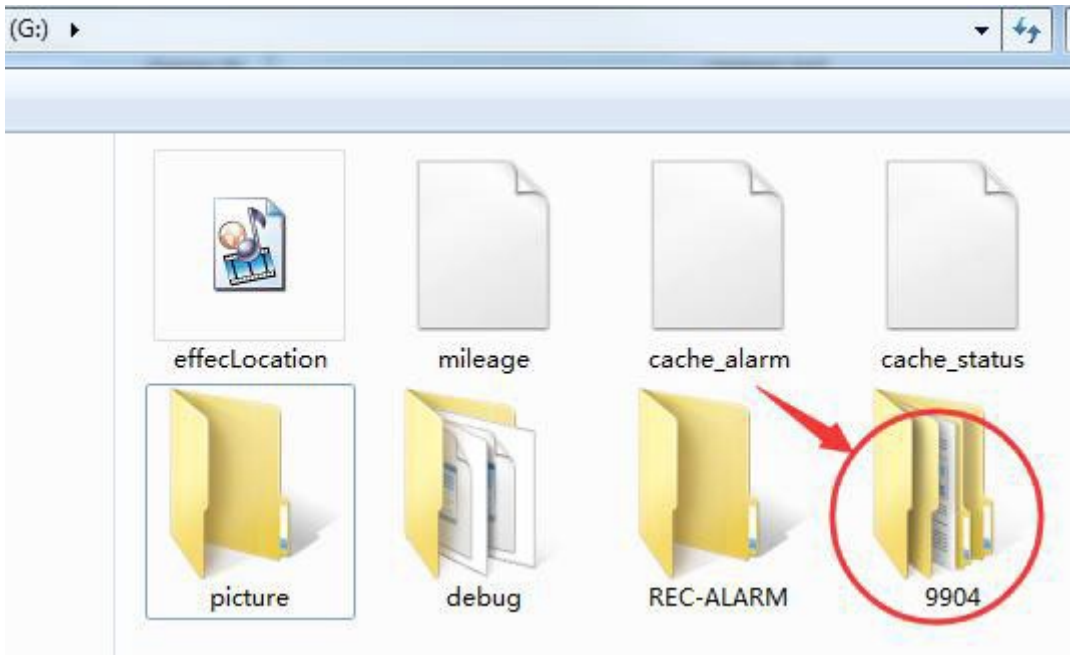
000000: channel 1 000100: channel2 000200: channel3 000300: channel4

16:45:15~16:46:09: start time and end time of this recording file

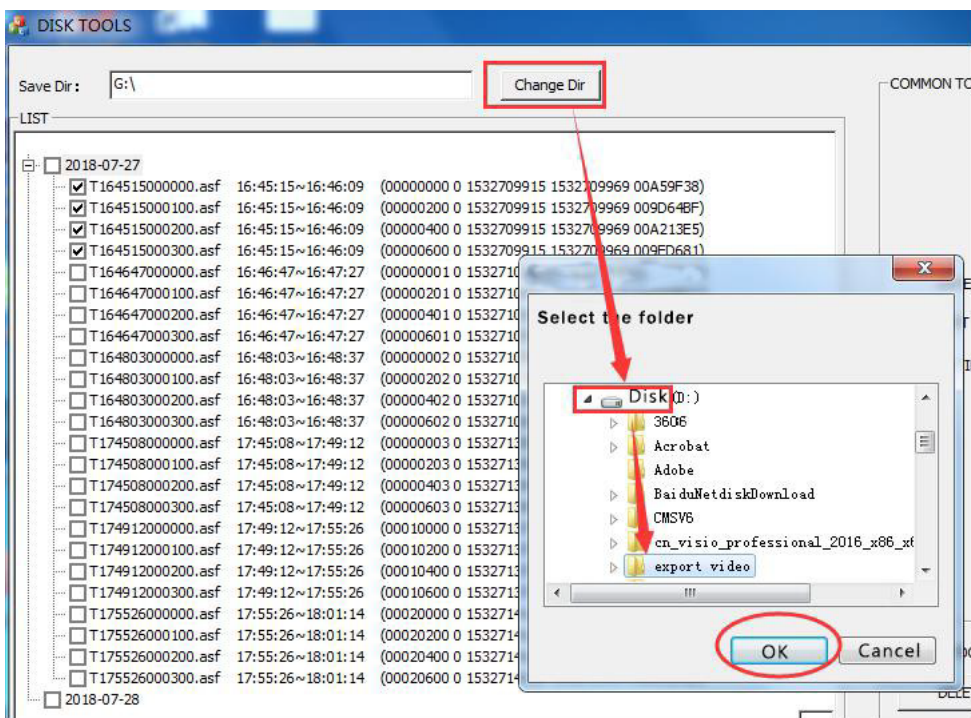
Export the file

Create a folder (On the C: Drive) for the videos on the PC, right click and new folder in File Explorer.

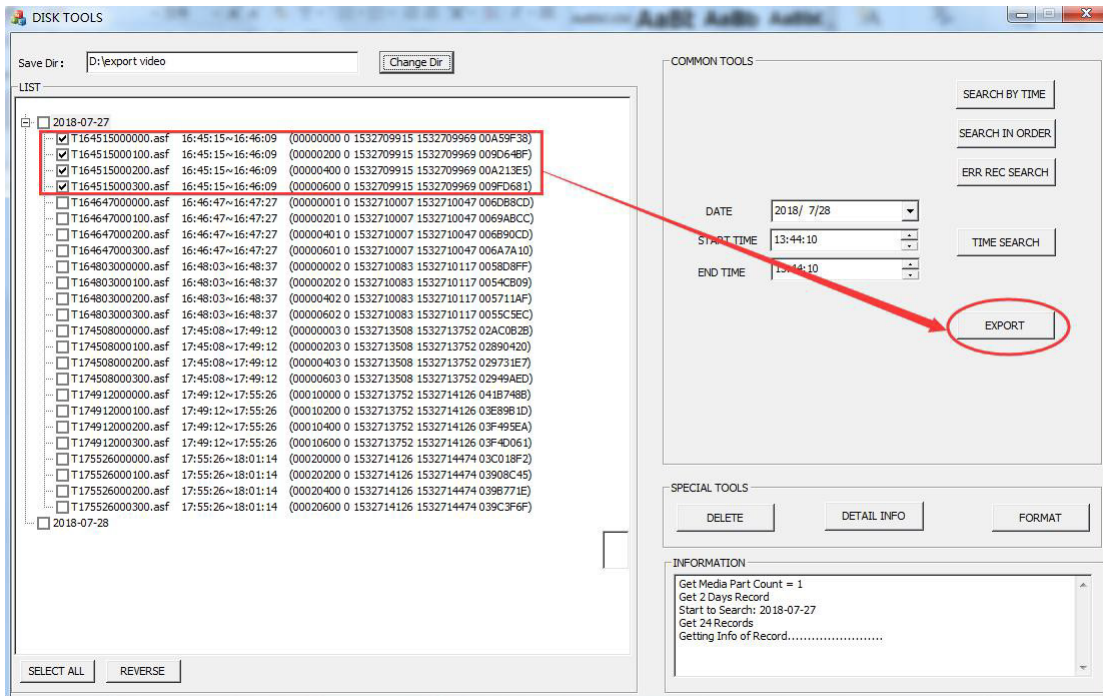
Attention: If a new folder is not created in the C: Drive, the videos will be saved on the SD Card automatically.



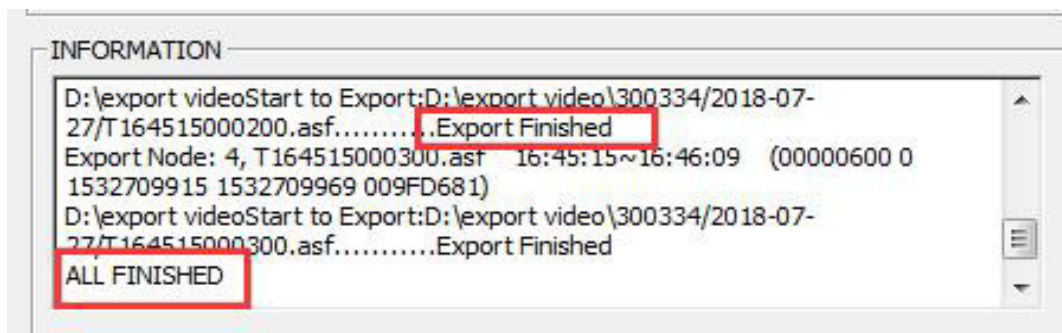
Select the exported files' save path, where the folder was created.



Select the files required to export, click the **Export** button.



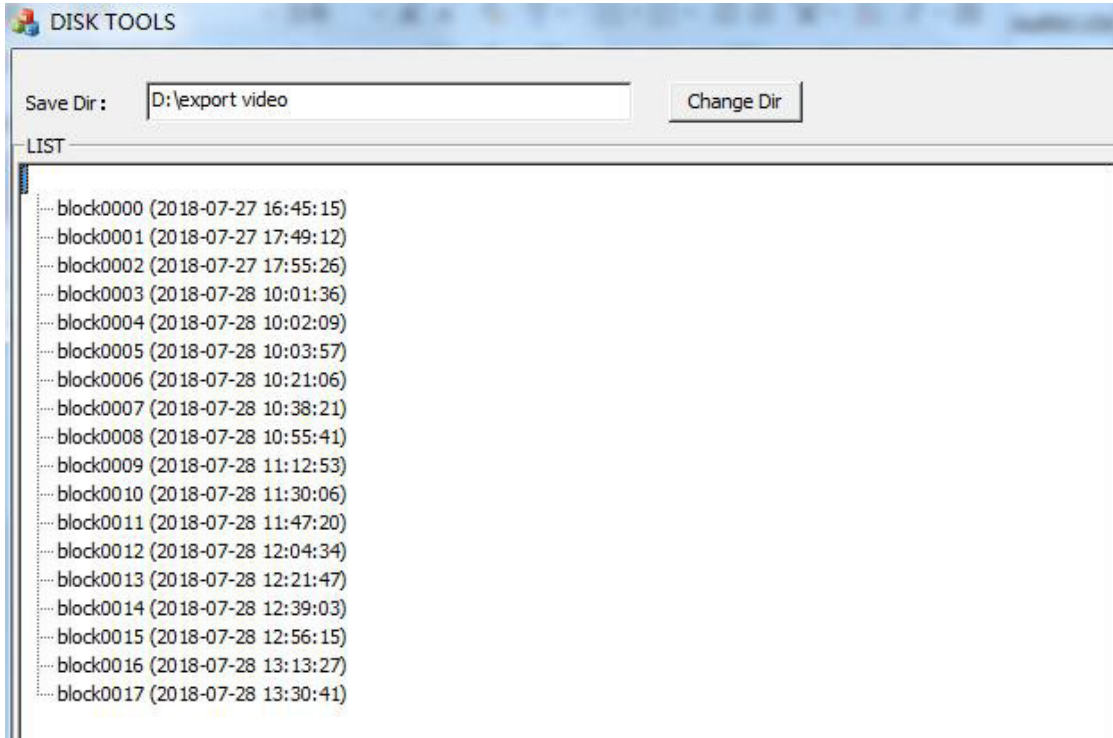
The **INFORMATION** Box will show the progress of exporting.



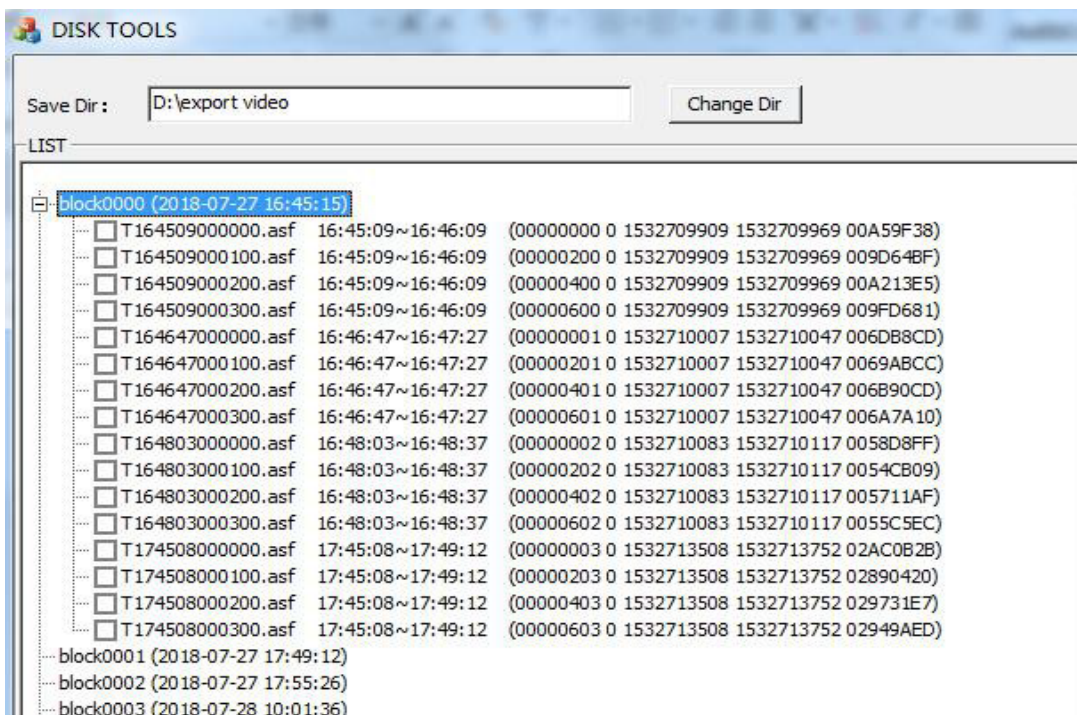
TIPS - Export all files [**Not recommended**]: The whole day can be extracted, customers can also select all the dates, to export all the files at one time. The file size of the export will be very large and it will take a long time so this is not recommended.

3. Search by Order and export files

This is used for debug in general. The tool will show all the recording files by time when the file is written on the disk. If there is an error with date and time on the SD MDR and the files cannot be shown click SEARCH BY TIME, to show all results.

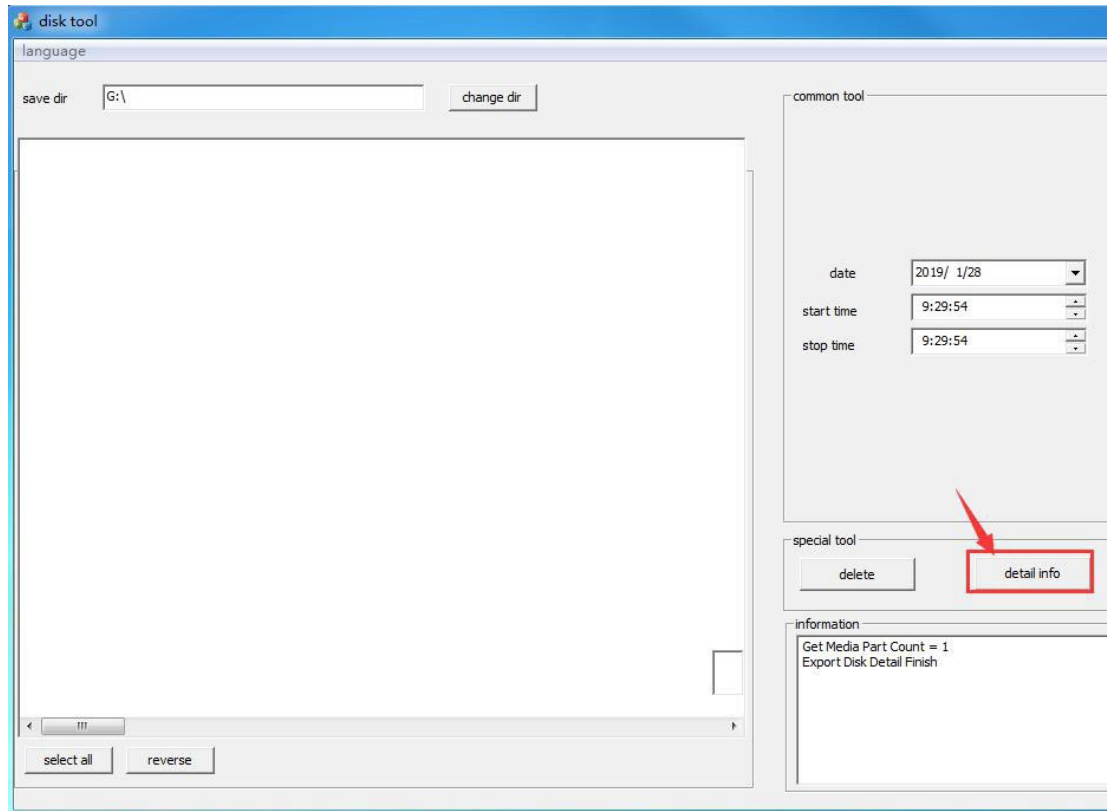


Double click on the blocks, this will show the recording files. Then select the files and export. Select the files on different blocks to export them in one time after extract.



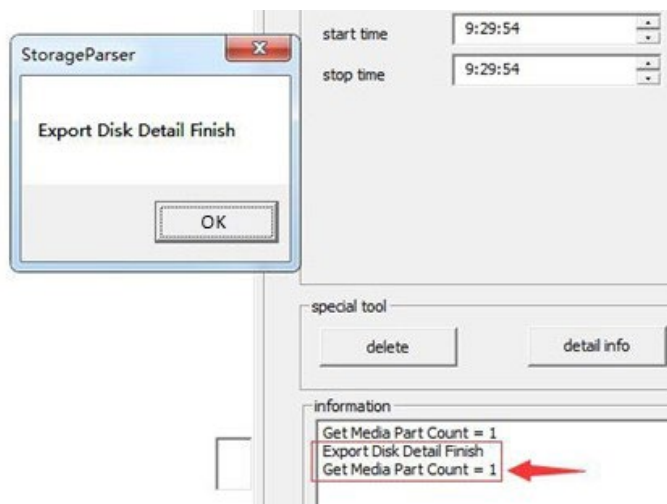
Then export the files you require.

4. Export Disk Log

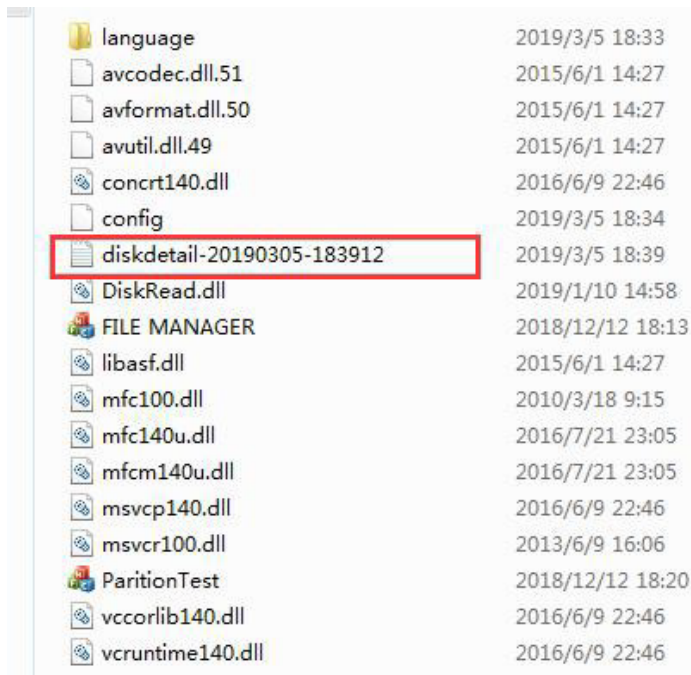


Disk Logs may need checking for support purposes if there is an error with the recorded file.

Select the disk first, then Click the **Detail info**. It will export the Log.



Go to the folder on the SD card to find the TXT file (see image above) in the root directory, copy, and send it to support.



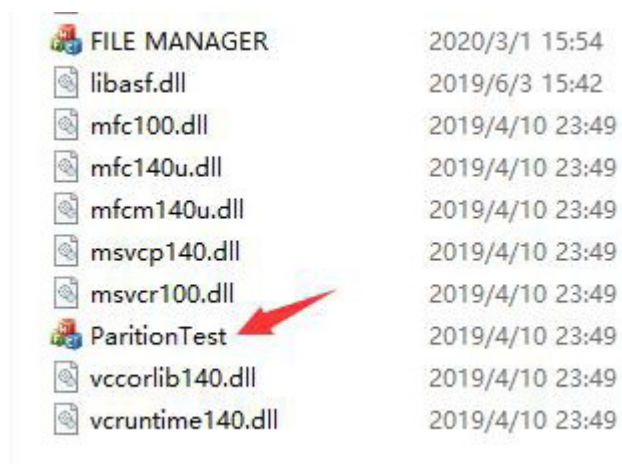
language	2019/3/5 18:33
avcodec.dll.51	2015/6/1 14:27
avformat.dll.50	2015/6/1 14:27
avutil.dll.49	2015/6/1 14:27
concr140.dll	2016/6/9 22:46
config	2019/3/5 18:34
diskdetail-20190305-183912	2019/3/5 18:39
DiskRead.dll	2019/1/10 14:58
FILE MANAGER	2018/12/12 18:13
libasf.dll	2015/6/1 14:27
mfc100.dll	2010/3/18 9:15
mfc140u.dll	2016/7/21 23:05
mfc140u.dll	2016/7/21 23:05
msvc140.dll	2016/6/9 22:46
msvcr100.dll	2013/6/9 16:06
PartitionTest	2018/12/12 18:20
vccorlib140.dll	2016/6/9 22:46
vcruntime140.dll	2016/6/9 22:46

5. Format the Disk

Attention - This will erase all recorded video files on the SD card.

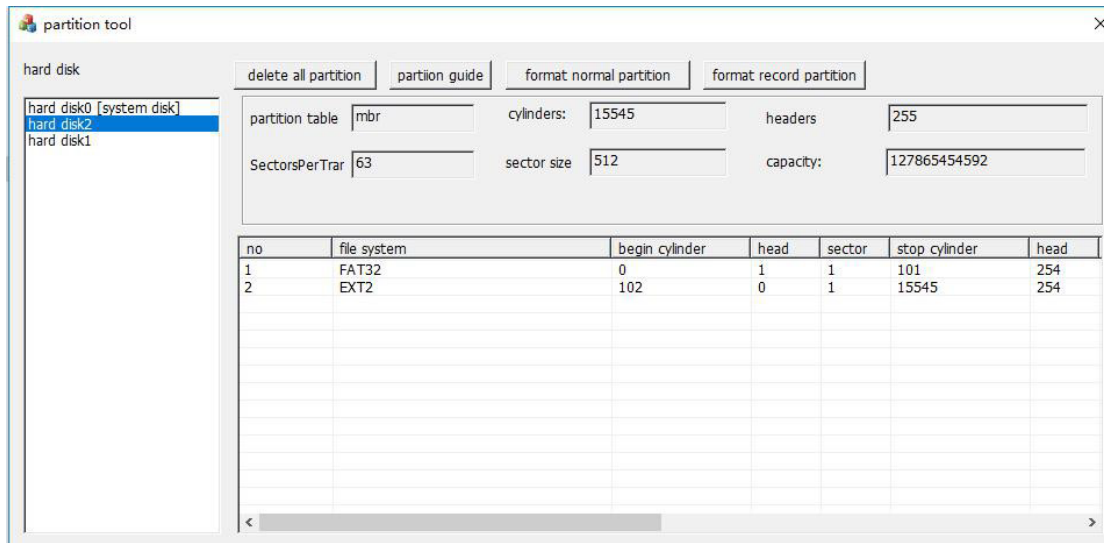
Double click on PartitionTest.exe to open the application.

This will format the normal partition area (FAT32, which saves log & picture), Record partition area (invisible video area), or totally format the disk (click on delete all partition at the top for this) to the original factory FAT32 mode.



FILE MANAGER	2020/3/1 15:54
libasf.dll	2019/6/3 15:42
mfc100.dll	2019/4/10 23:49
mfc140u.dll	2019/4/10 23:49
mfc140u.dll	2019/4/10 23:49
msvc140.dll	2019/4/10 23:49
msvcr100.dll	2019/4/10 23:49
PartitionTest	2019/4/10 23:49
vccorlib140.dll	2019/4/10 23:49
vcruntime140.dll	2019/4/10 23:49

Select the Disk, which contains FAT32 and EXT2 (Video area)



Format the disk (click on format normal partition) to the original factory FAT32 mode. It will format the disk to **partition num 1**.

